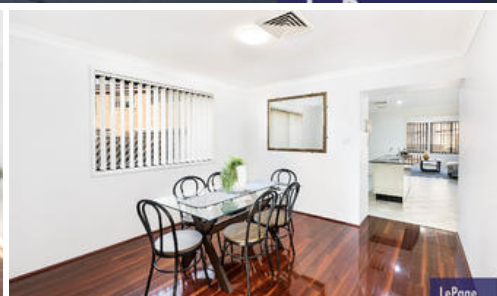
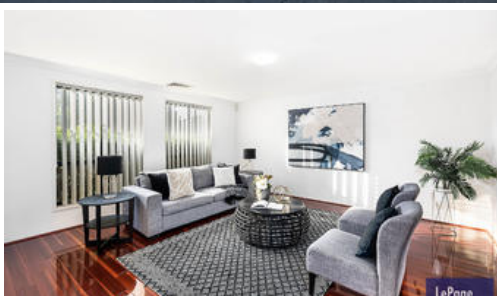
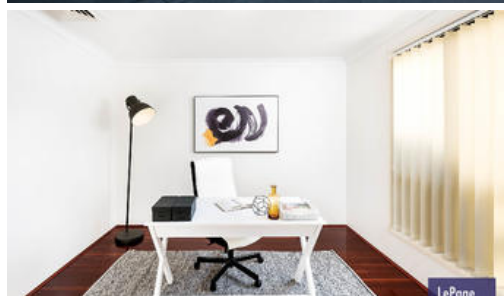


Sold



11 Lindwall Pl, Rouse Hill



Substantial Family Home in Prime Position

Located in a tree-lined cul de sac in walking distance to Rouse Hill Primary School, childcare centre, retail village and transport needs, this home will suit a large or blended family. Well-appointed with generous proportions, offering an abundance of living and sleeping quarters plus family friendly yard and secluded position.

Imposing entertainer's stone and polyurethane kitchen with island bench, gas cooking, extra-large pantry and an plenty of storage/bench space
Open plan formal lounge and dining rooms with sleek polished floorboards
Casual lounge and dining rooms seamlessly flowing onto alfresco area
Bonus rumpus/family room or convert to theatre room
Sizeable study/home office or convert to 5th bedroom
4 comfortable double bedrooms, grand master bedroom with WIR and elegant ensuite plus relaxation area
Teenage retreat space on upper level
Substantial patio, ideal for alfresco entertaining blended with sizable yard for kids and keen gardeners, all on a 634m2 block

Discrete entrance with internal access and rear roller door for parking

4 2 2

Price

SOLD for
\$1,220,000

Property Type

residential

Property ID

36

Land Area

634 m2

Agent Details

Julie Lepagier - 0427502730

Office Details

Lepage Property
Unit 302 33 Lexington Dr Bella Vista
NSW 2153 Australia
0427502730

The above information provided has been furnished to us by the vendor/s. We have not verified whether or not that information is accurate and do not have any belief in one way or the other in its accuracy. We do not accept any responsibility to any person for its accuracy and do no more than pass it on. All interested parties should make and rely upon their own inquiries in order to determine whether or not this information is in fact accurate.